

# REA Energy Cooperative, Inc.

A Touchstone Energy® Cooperative



Website: [www.reaenergy.com](http://www.reaenergy.com)  
Email: [reaenergy@reaenergy.com](mailto:reaenergy@reaenergy.com)

**Chad Carrick**  
President and CEO

#### STAFF

**Barry Baker**  
Indiana Operations Manager

**Erin Bauer**  
ACRE Coordinator

**Shane Cribbs**  
Network & Systems Manager

**Dave Daugherty**  
Safety & Right of Way Manager

**Jeff Dishong**  
Ebensburg Operations Supervisor

**Lisa Gardill**  
Accounting & Finance Manager

**Nick Hartman**  
Manager of Engineering

**Stacy Hilliard, CCC, CKAE**  
Communications & Marketing Manager  
Local Pages Editor

**Bryon Roland**  
Purchasing & Facilities Manager

**Renee Spalla**  
Supervisor of Consumer Services

**Chris Weller**  
Load Management Supervisor

**OUTAGES & EMERGENCIES**  
844-920-3395

**OFFICE HOURS**  
Indiana Office: 7 a.m. - 3:30 p.m.  
Ebensburg Office: 7 a.m. - 3:30 p.m.  
Monday, Wednesday and Friday  
Closed Tuesday and Thursday

## COOPERATIVE CONNECTION

### Guest Column

## Your Power Explained: Distribution



**STACY HILLIARD**

**LOCAL ELECTRIC COOPERATIVES**, like REA Energy, play a crucial role in providing reliable, affordable and equitable electricity to rural areas across the United States. REA Energy is an electric distribution cooperative, meaning we must purchase wholesale power from others to distribute it to our members.

### The role of an electric distribution cooperative

The distribution phase is also known as the final stage of an electrical power system. The primary role of electric distribution is to carry electricity from the transmission lines to the end-user or member, delivering this electricity from our substations to homes, farms and businesses. The cooperative is also responsible for maintaining and upgrading infrastructure as needed to ensure the delivery of reliable service to our members.

Other ways your cooperative provides service and support to members is by handling outage restoration, monthly billing, and offering energy efficiency programs to help consumers optimize their electricity use.

To be able to maintain and pay for the services and support listed above, REA Energy has a structured rate system. As of March, your monthly bill now shows your usage with a breakdown of the rates for generation and transmission (G&T) and distribution. Let's explore the distribution rate.

### Costs involved in electric distribution

REA Energy incurs various costs to ensure reliable power delivery to our members. These include:

- **Power purchase costs:** This is the expense of buying electricity from a G&T cooperative, or wholesale energy supplier. In our case, that supplier is Allegheny Electric Cooperative, Inc., based in Harrisburg. Power purchase costs may vary based on energy market fluctuations and demand.
- **Infrastructure and maintenance costs:** These are the costs incurred when constructing and maintaining power lines, poles, transformers, and substations, along with upgrading aging infrastructure, to improve efficiency and reliability.
- **Operational costs:** These are our costs for facilities, vehicles, equipment, tools and staff.
- **Regulatory and compliance costs:** The cooperative incurs these costs to meet federal, state, and local energy regulations and safety standards.
- **Technology and modernization investments:** These costs are associated with implementing smart-grid technology and cybersecurity measures to protect infrastructure and customer data.

Many of the costs listed above will likely increase over the years, potentially requiring periodic rate increases. Electric cooperatives work to keep their rates low by delivering safe and reliable electricity to rural communities at a cost that families and businesses can afford.

### A members-first approach

Electric distribution cooperatives play a crucial role in delivering electricity to rural communities. By managing the distribution network and maintaining a members-first approach, we provide reliable, affordable and community-driven energy solutions. Our commitment to service, sustainability and local engagement ensures that members receive high-quality electricity while having a direct impact on the cooperative's direction and policies. 🇺🇸

**STACY HILLIARD, CCC, CKAE**  
COMMUNICATIONS & MARKETING MANAGER

# On the Line: The Tough, Dangerous Job of Lineworkers

## Lineworker Appreciation Day is April 14

KAYLA KING, CCC, MARKETING AND BUSINESS DEVELOPMENT SPECIALIST

**ELECTRIC COOPERATIVE** lineworkers play a vital role in ensuring that homes and businesses in rural areas have electricity. This physically demanding and often dangerous job requires specialized skills and a deep commitment to community service. These lineworkers work hard to provide reliable power to rural communities, the very communities that they often live in themselves.

### The role of a lineworker

Lineworkers are responsible for installing, fixing and maintaining the power lines that bring electricity to homes and businesses. They often work with high-voltage power lines, which can be dangerous, especially during storm outages and other emergencies. When there is an outage, lineworkers are called on to fix the problem, no matter the time

of day or night. They often work in harsh weather, including rain, snow and extreme heat.

In addition to technical skills, lineworkers need physical strength. They frequently climb utility poles or use bucket trucks to reach power lines. They must be able to troubleshoot electrical problems, use special tools and follow strict safety rules to avoid accidents.

### A day in the life

A typical day for a lineworker starts with a safety meeting, where the crew goes over any potential dangers they may face on the job. Then, they head out to various locations, which may be in remote areas or small towns within the cooperative's service area.

If a job involves upgrading equipment or building new lines, lineworkers check power poles and transformers to make sure everything is working properly. If there is an outage, they assess the damage and work quickly to restore power, often enduring severe weather conditions. Effective communication is key because lineworkers often work in teams or need to interact with consumer-members when tackling outages and repairs.

A common task for lineworkers is climbing a utility pole to fix broken power lines. They wear protective gear like hard hats, harnesses and rubber sleeves to stay safe when working on powered electrical lines at heights up to 50 feet. The tools and gear they carry can weigh up to 50 pounds. While the job can be tiring and stressful, lineworkers feel proud knowing they are keeping an important service running for their communities.

### Skills and training

To become an electrical lineworker, extensive training is required.

Many electric cooperatives offer apprenticeship programs lasting about four years. These programs offer a combination of on-the-job learning with classroom instruction. The training covers everything from how electricity works to how to use specialized tools and safety procedures. After completing the program, lineworkers become journeymen and can later train to become chief lineworkers with even more experience.

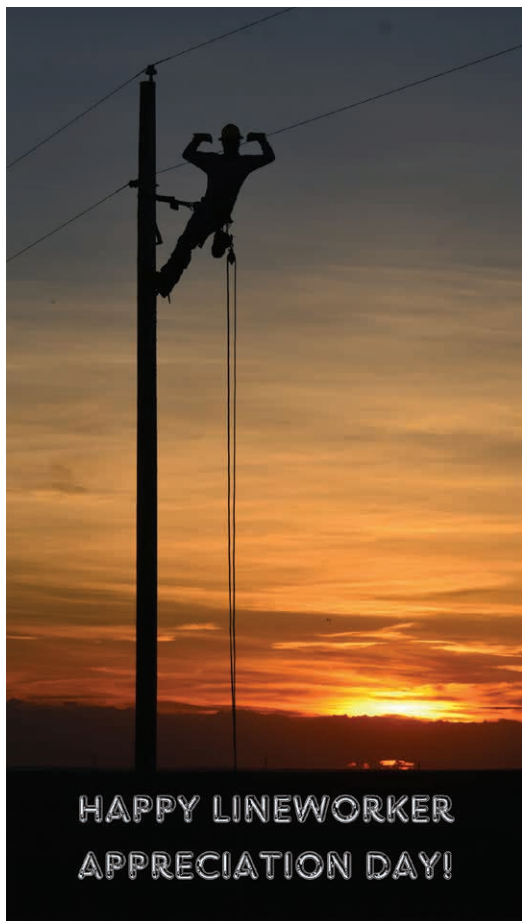
### Serving the community

One unique aspect about working for an electric cooperative is the close connection to the community. Since cooperatives are owned by the people they serve, lineworkers often know the people they are helping, or the lineworkers themselves may even be members of the cooperative. This creates a sense of pride and purpose, as many lineworkers feel like they are directly serving their neighbors.

During emergencies like natural disasters, lineworkers are crucial in recovery efforts. They work closely with emergency responders to restore power. Even though these situations may involve long hours in difficult conditions, lineworkers are dedicated to making sure their communities have electricity when they need it most.

Being an electric cooperative lineworker is a tough, but rewarding job. Lineworkers are key to keeping the power on at homes and businesses, especially in rural areas. With their expertise, training, and commitment, they help make sure electricity is dependable and safe.

While the job can be challenging, the sense of purpose, pride and connection to the community makes it all worthwhile. Electric cooperatives like REA Energy are grateful for their hardworking lineworkers. 🇺🇸



# Vines, Views and Flavor: What Makes Woody Lodge Winery in Ashville a Must-Visit

KAYLA KING, CCC, MARKETING AND BUSINESS DEVELOPMENT SPECIALIST

**TUCKED AWAY IN** the peaceful hills of Ashville, Woody Lodge Winery is a cozy and charming spot for both wine lovers and nature enthusiasts. This locally owned and operated business is the perfect place to relax, enjoy a glass of wine, and absorb the beautiful scenery. Whether you are a seasoned wine connoisseur or just someone who appreciates the beauty of nature, Woody Lodge Winery is a welcoming place for all.

## A dream come to life

The winery has been part of the Ashville community since 2013, when it was opened by Margie Keller to combine her loves of winemaking and the outdoors. Margie started as an amateur winemaker and won several contests with her signature wines. The judges of the American Wine Society suggested she open a winery, and she selected Ashville as the location because of family ties to the region.

"I was born and raised in Ashville on my parents' 11 acres of land, where the winery now resides," Margie says. "My son researched ways to cultivate the soil to produce the best grape results for the region."

Her son, John Gailey Jr., became a co-owner in 2017. Her other children and their spouses also volunteer to tend to the grounds and grapes.

Margie has worked hard to create a warm, inviting place for visitors. Her dedication shines through in everything about the winery, from the quality of the wine to the care put into the land. The rustic design and homey vibe make the winery an inviting place.



## Delicious wines for every taste

One of the biggest draws is the vast selection of wines, ranging from sweet to dry, which ensures something for every palate. The most popular wines include fruity reds, crisp whites and smooth rosés. Each wine is crafted with care using grapes from the family's vineyards, which ensures freshness and quality.

Woody Lodge's signature and all-time best-selling wine is the Niagara, a sweet white wine that tastes like a freshly picked grape. For semi-sweet red lovers, Red Dog Road is a must. For those who enjoy an invigorating rosé, the Queen of Hearts is a perfectly balanced wine. The winery also offers wine slushies and Tipzy Cow Wine ice cream, making each visit a unique experience.

## A picture-perfect location

Situated on a hill, the winery offers stunning panoramic views of the countryside. Visitors can relax on the deck, enjoy the peaceful surroundings and sip wine while soaking in the scenery. It's the perfect escape.

The winery also has a satellite location at 679 Philadelphia St. in Indiana, Pa. Also, a new location is set to open soon at the new Center City Market in the historic McCrory's building in Altoona.

## Fun events all year round

The winery hosts many events throughout the year. Visitors can enjoy live music, trivia nights, food trucks, book clubs and wine-tasting parties. The winery also sets up booths at many local events and festivals. To learn more, check out [woodylodgewinery.com/festival-events](http://woodylodgewinery.com/festival-events) or look for announcements on its Facebook page.

The winery offers private event spaces for weddings, birthdays, bridal showers and other occasions. With its beautiful setting and delicious wines, it's no wonder that many people choose Woody Lodge as the backdrop for their celebrations.

## Plan your visit

Located at 1301 Colonel Drake Highway, Ashville, the winery is a perfect destination for anyone who wants to enjoy great wine, beautiful views and a relaxing atmosphere. Whether you're there to sample wine, take in the stunning landscape or attend a special event, the winery offers something for everyone. With its rich selection of wines, welcoming atmosphere and commitment to quality, Woody Lodge Winery is truly a hidden gem in the heart of Pennsylvania. 🍷





## IMPORTANT ANNOUNCEMENT

### Possible Mailing Delays of Members' Monthly Electric Bills

We want to keep our members informed that some may experience delays in receiving their electric cooperative bills due to recent changes in USPS operations under the "Delivering for America" plan. These nationwide postal adjustments may slow delivery times, affecting when your bill arrives.

You can access your bill any time by signing up for SmartHub at [reaenergy.com](http://reaenergy.com), or downloading the MyREAEnergy app.

With SmartHub you can:

- Sign up for e-billing to receive your statement instantly via email.
- Use our online or mobile payment options.
- View your electric bill and usage.

Please call 724-349-4800 if you have questions or need help with your account. During this time, we will be extending the net payment period based on when the bills are mailed.

We appreciate your patience and cooperation as we work together through these changes.

Thank you for being a valued member of REA Energy Cooperative!

REA ENERGY IS  
Closed for  
**Good**  
APRIL 18,  
2025 Friday  
TO MAKE A PAYMENT OR REPORT A POWER OUTAGE, CALL  
844-920-3395  
**REA** energy  
Cooperative Inc.

**Director petitions for  
Districts 5 & 6 are  
due June 20.**

**Contact REA Energy  
to learn more today!**

### Right-of-Way Management News

REA Energy contractors from Penn Line Tree Service will be trimming the rights of way near the Livermore substation area and emergency maintenance areas in April.

Members in the affected areas will be notified. Contractors will perform all right-of-way work per REA Energy specifications. All contractors will carry employee identification cards, and their vehicles will display their company name. If you have any questions, call 724-349-4800 or view the specifications at [reaenergy.com](http://reaenergy.com).

## Your Board of Directors



Michael J. Bertolino  
Chairman  
District 3

Wayne Farabaugh  
Vice Chairman  
District 8

Robert P. Neese  
Secretary/Treasurer  
District 5

Sandra Dill  
District 9

Tom Beresnyak  
District 1

Anthony Enciso  
District 7

Thomas Aurandt  
District 4

John R. Learn  
District 6

J.R. "Rick" Shope  
District 2

*REA Energy is an equal opportunity provider and employer.*